

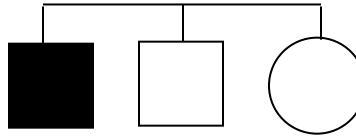
Name: _____

Goal: To create a pedigree using a trait from Omah and Opah's family tree.

1. Using your Omah and Opah family tree (notebook page 29), create a pedigree.
 - a. Make sure you are using the correct shapes for males (squares) and females (circles).
 - b. Make sure you are connecting each family member using the correct lines.
 - i. Lines connecting shapes from the SIDES indicate MARRIAGE.



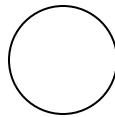
- ii. Lines from the TOP of shapes indicate offspring/siblings.



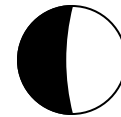
2. Write the name of each alien under its corresponding shape.
3. Choose ONE trait that follows the dominant/recessive inheritance pattern: mouth, ears, nose, or eyes. Label your pedigree with that trait.
4. Include a key for your chosen trait, explaining the shading. Remember:



= has the recessive trait



= homozygous dominant



= carrier/heterozygous

5. Correctly shade each alien's shape according to their genotype.

Notes:

- **Mouth** – ALL genotypes are known for sure.
 - **Nose** – There are 2 aliens in the 3rd generation whose genotypes could be either homozygous or heterozygous dominant. YOU CHOOSE how you want to shade these 2 dominant traits.
 - **Ears & Eyes** – Omah and Opah could be homozygous or heterozygous dominant for these traits, but at least ONE of them must have one recessive allele to pass on to the second generation (because Wilbur is heterozygous for both ears and eyes, at least one recessive allele had to come from his parents). There is one alien in the 3rd generation whose genotype could be either homozygous or heterozygous dominant. YOU CHOOSE how you want to shade this dominant trait.
6. Draw some illustrations/decorations to make your pedigree look eye-catching. Make sure this is your best work, you will be graded using the rubric on the back of this paper. These directions should be folded hamburger-style and glued to notebook page 38.

Name: _____

Requirement	Points			
	All – 2	Most – 1	Few/None – 0	
Correct Shapes	All – 2	Most – 1	Few/None – 0	
Correct Lines	All – 2	Most – 1	Few/None – 0	
Aliens' Names Labeled	All – 2	Most – 1	Few/None – 0	
Trait Labeled on Pedigree	Yes – 1	No – 0		
Key Written Correctly	All – 2	Most – 1	None – 0	
Shapes Shaded Correctly	All – 4	Most – 3	Few – 2	Few/None – 2
Neatness	Amazing – 1.5	Great – 1	Good – .5	Poor - 0
Color/Creativity	Amazing – 1.5	Great – 1	Good – .5	Poor - 0

Total Points: _____/15 = _____%

Comments: