

Match each component of the cardiovascular system with its definition AND picture. Each word should have a NUMBER (definition) and LETTER (picture).

1. A cell in the blood that takes up oxygen in the lungs and delivers it to cells in other parts of the body.
2. Blood vessel that carries blood AWAY from the heart.
3. Each of the two lower chambers of the heart that pump blood out of the heart.
4. Tiny blood vessels where substances are exchanged between the blood and the body's cells.
5. Each of the two upper chambers of the heart that receive the blood that enters the heart.
6. A blood cell that fights disease.
7. The liquid part of blood, which makes up over half of its volume.
8. A flap of tissue in the heart or vein that prevents blood from flowing the wrong direction.
9. The component of blood that plays an important role in stopping bleeding and forming blood clots.
10. A blood vessel that carries blood back to the heart.

___artery___

___atrium___

___capillary___

___plasma___

___platelet___

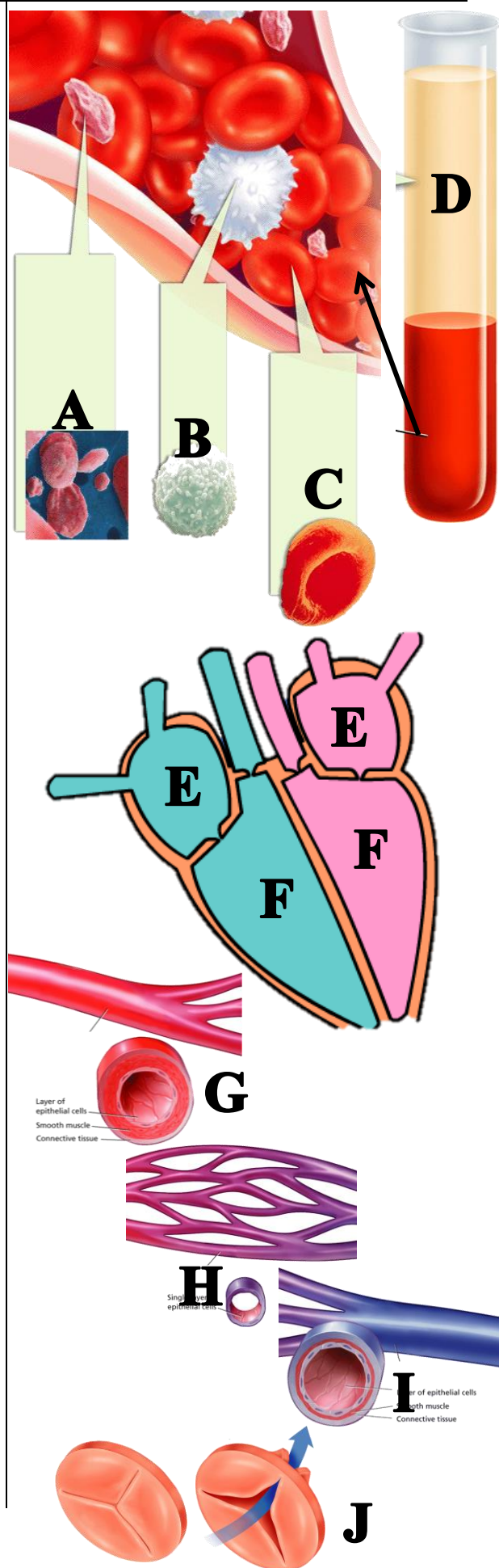
___red blood cell___

___valve___

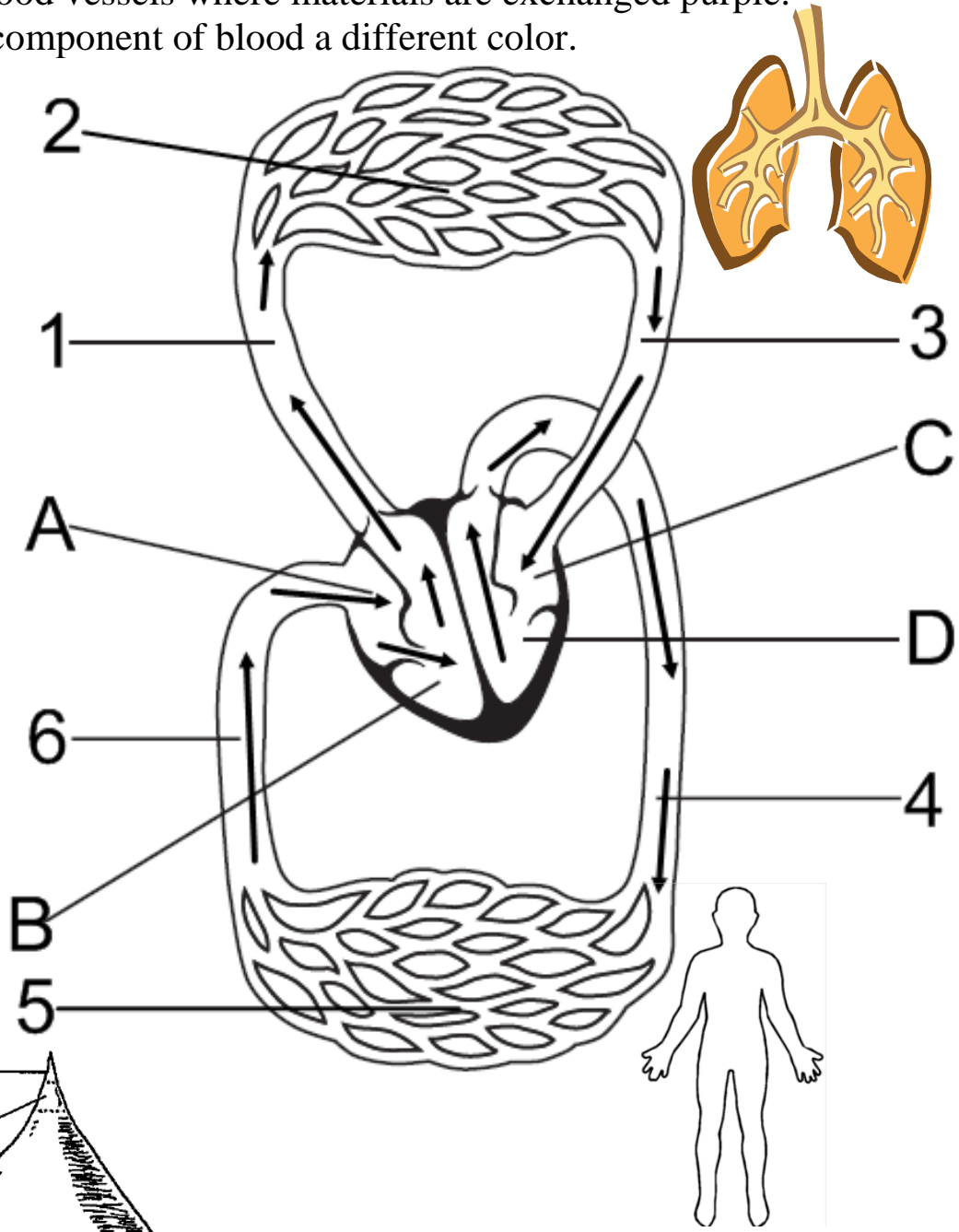
___vein___

___ventricle___

___white blood cell___



1. Label the blood vessels (numbers) and parts of the heart (letters).
2. Color the blood vessels carrying oxygen red.
3. Color the blood vessels carrying carbon dioxide blue.
4. Color the blood vessels where materials are exchanged purple.
5. Color each component of blood a different color.



White blood cells help fight infections.

Platelets help blood clot when you cut yourself.

Red blood cells carry oxygen and carbon dioxide throughout the body.

Plasma is a yellowish liquid made mostly of water.

Word Bank:

Blood Vessels (#'s)

- artery to body
- artery to lungs
- capillaries in body
- capillaries in lungs
- vein from body
- vein from lungs

Heart Parts (abc's)

- left atrium
- right atrium
- left ventricle
- right ventricle