

**Absent Directions:**

The "GENETIC" number is the number of NON-red genes the person has from the Genetic Factors pedigree.

The "LIFE/ENVIRO." number is the number from adding the individual risks for the Lifestyle & Environment pedigree.

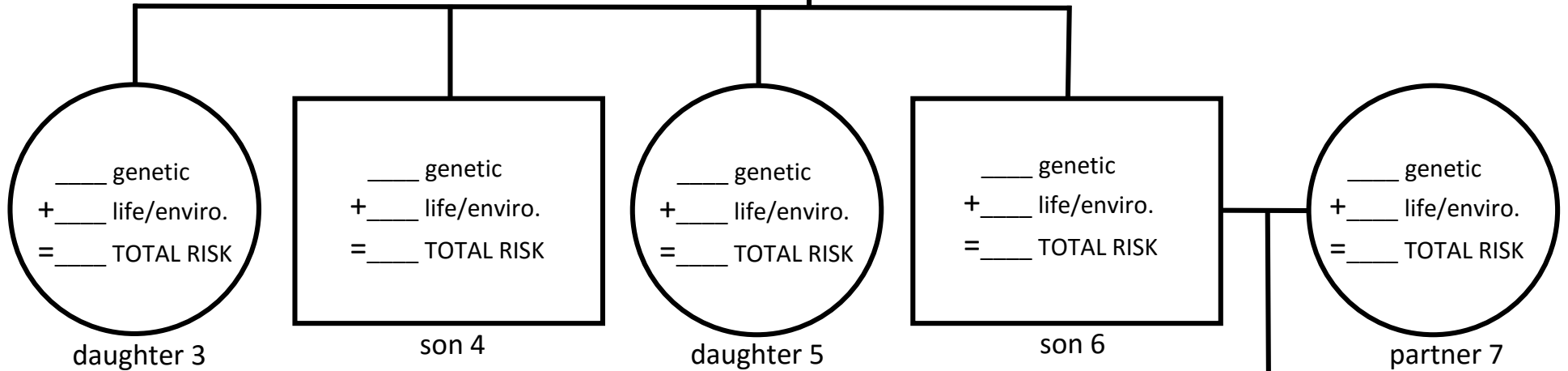
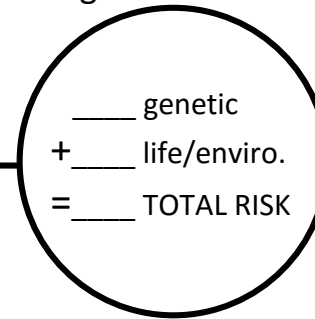
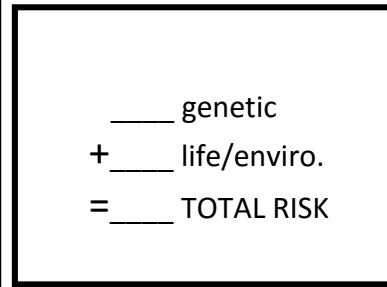
The TOTAL RISK is the above two numbers added together.

Color according to the key.

# Heart Disease Pedigree

grandfather 1

grandmother 2



## Total Risk

0 to 3 = LOW (yellow)

3.5 to 5.5 = MEDIUM (orange)

6 to 12 = HIGH (red)

