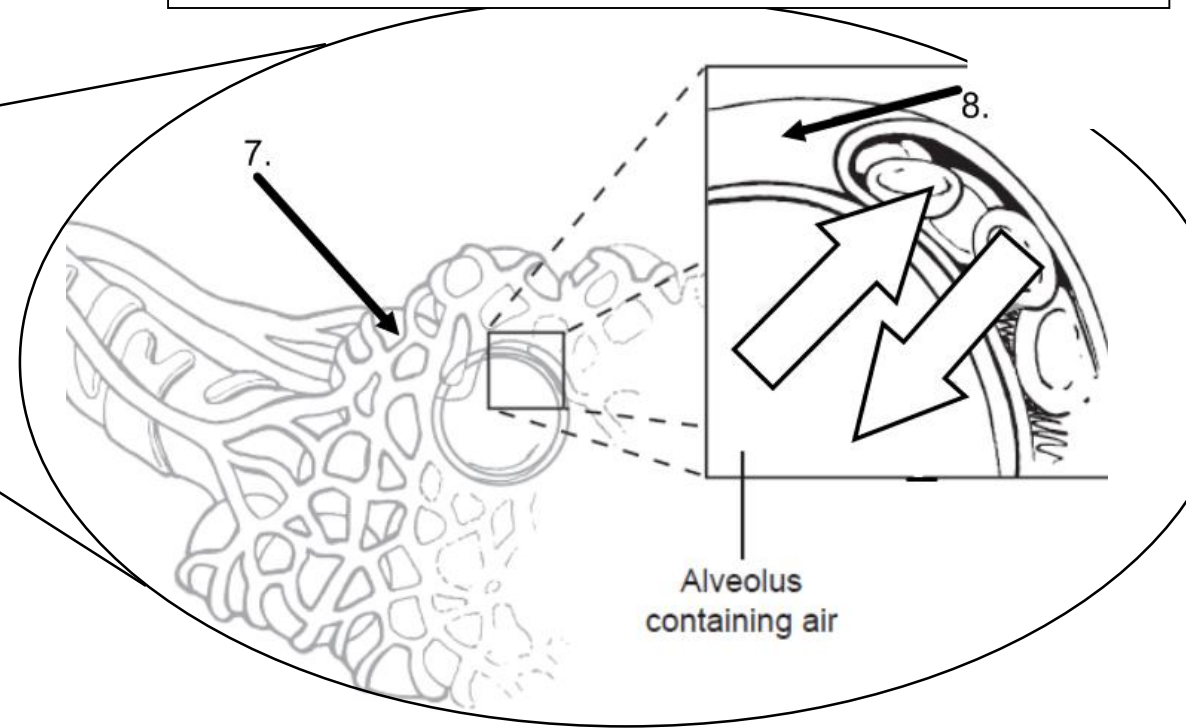


Directions: Use the number code to LABEL and COLOR the diagram.

1. You take in air through your **nasal passage**. *Color it green.*
2. The **pharynx** connects your mouth and nasal passage; it is shared with the digestive system, but the epiglottis prevents food from entering the lungs. *Color it yellow.*
- * The **larynx** is made of muscle and cartilage; it is where your vocal chords are located. *Color it brown.*
3. The **trachea** is a tube that serves as the main passageway for air to get into and out of the lungs. *Color it purple.*
4. Air moves from the trachea into the left and right **bronchioles**, which divide into smaller and smaller tubes. *Color them orange.*
5. The **lungs** absorb oxygen from the air you breathe. *Color them blue.*
6. A large wall of muscle, the **diaphragm**, controls when air enters and leaves the lungs. *Color it pink.*
7. At the end of the bronchioles are tiny air sacs called **alveoli**. *Color them gray.*
8. Each alveoli is surrounded by a **capillary**. *Color the red blood cells red. Label the arrows to show oxygen entering the blood and carbon dioxide leaving the blood.*



p. 411 How is respiration different from breathing?

p. 412 How do the respiratory, digestive, and circulatory systems work together to carry out respiration?