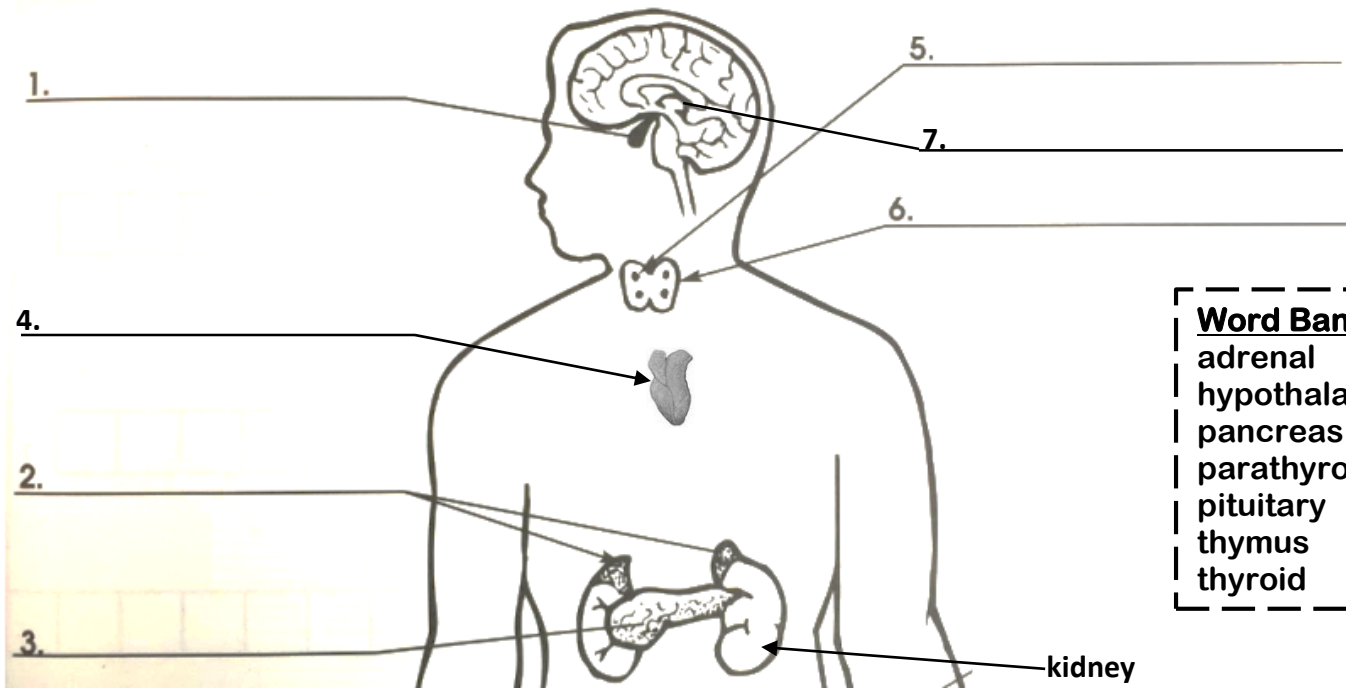


Endocrine System

Directions:

For each clue, unscramble the letters to determine the answer (use the word bank to help you). Label each organ in the endocrine system and color it according to the clue.



1. The “master gland” located at the base of the brain which controls growth and releases many different hormones to control other glands. itryaiput <i>blue</i>	<input type="text"/>
2. The glands that release adrenaline to help the body respond to stress and exercise; also release chemicals that control the amount of salt and water that the kidneys absorb. ldanera <i>red</i>	<input type="text"/>
3. The gland located just under the stomach that releases insulin and glucagon to control blood sugar, and pancreatic juice. aparescn <i>orange</i>	<input type="text"/>
4. Located near the heart, hormones from this gland help the immune system during childhood. stuhmy <i>purple</i>	<input type="text"/>
5. The four glands that help control amount of calcium and phosphorus in the blood. atihrradoyp <i>leave black</i>	<input type="text"/>
6. The gland in the neck that makes a hormone which controls the rate at which the body uses energy. yrhdoit <i>green</i>	<input type="text"/>
7. Links the nervous and endocrine systems and controls the pituitary gland. hotphsmulaya <i>yellow</i>	<input type="text"/>
8. The system of the body that is made up of glands that release chemicals to control certain body functions. dconeinre	<input type="text"/>
9. Any organ that makes chemicals to control certain body functions. algdn	<input type="text"/>
10. Chemicals that are produced by glands and released into the blood. honrmeso	<input type="text"/>

